

Learned Society of Wales



New Fellows Guide 2020

Welcome to the Learned Society of Wales.

The Learned Society of Wales champions excellence across all academic fields and beyond.

Founded in 2010, we are the newest national scholarly academy in the UK.

We are a pan-disciplinary Fellowship of over 560 individuals from the arts, sciences and public sector.

All our Fellows have contributed to the world of learning. They represent excellence and have a strong connection to Wales.

Using the expertise of our Fellows, we promote research, inspire learning and provide independent policy advice.



**THE LEARNED SOCIETY OF WALES
CYMDEITHAS DDYSGEDIG CYMRU**

OUR STRATEGY

STRATEGIC PLAN 2018 - 2023

The Society's current strategic plan sets out four over-arching aims which govern all we will do over the five years of the plan.



Champion research

Deliver high-quality events, celebrate excellence and offer platforms for early careers researchers.



Contribute expertise

Coordinate expert responses to consultations, support evidence-based policy-making and use our expertise to lead debate in key areas.



Promote learning and debate

Communicate our Fellows' work, support schools and colleges and inspire young people and future generations of researchers.



Develop the Fellowship

Increase Fellow involvement in our work, elect a wider range of Fellows and work with organisations that promote diversity.

OBJECTIVES: 2019-20



Become a widely known and valued authority for knowledge and expertise, across a range of audiences.

Foster discussion in areas where Wales has a strong academic record.



Communicate inclusively so that the Society's learning community becomes more diverse.

Empower Fellows to act on our mission and values.



THE LEARNED SOCIETY OF WALES
CYMDEITHAS DDYSGEDIG CYMRU

LSW STAFF

Our charitable objectives are defined in our Royal Charter and bye-laws as follows: 'The objects of the Society shall be for the benefit of the community, to advance education, learning, academic study and knowledge, so as to result in contributing to scientific, cultural, social, environmental and economic development within Wales and beyond.'

The role of our six members of staff is to help the Society meet these objectives, support its committees and Fellows and run and promote its events, activities and policy work.



Martin Pollard: Chief Executive

Martin leads on the Society's strategy, activity programmes and development of the Fellowship. He has overall responsibility for the management, staffing and financing of our work.

Email: mpollard@lsw.wales.ac.uk



Dr. Sarah Morse: Senior Executive Officer

Sarah coordinates the Society's events programme and policy work, working proactively with Fellows and partners to create engaging events, and to develop policy positions.

Email: smorse@lsw.wales.ac.uk



Amanda Kirk: Clerk & Development Officer

Amanda oversees the Governance structure of the Society, supports the work of the Council and committees and is involved in the Society's fundraising efforts.

Email: akirk@lsw.wales.ac.uk



Janice Gillian: Finance & Admin Officer

Janice is responsible for all aspects of LSW accounts, including Fellows' annual subscription payments, donations, gift aid and travel expense claims.

Email: jgillian@lsw.wales.ac.uk



Fiona Gaskell: Fellowship Assistant

Fiona maintains the Fellows' database, administers the election cycle for new Fellows and supports the medals award process.

Email: fgaskell@lsw.wales.ac.uk



Joe Boyle: Communications Officer

Joe oversees our media work, promoting events and the work and achievements of the Fellows on social media, on our website and through our mailing list and Fellows bulletin.

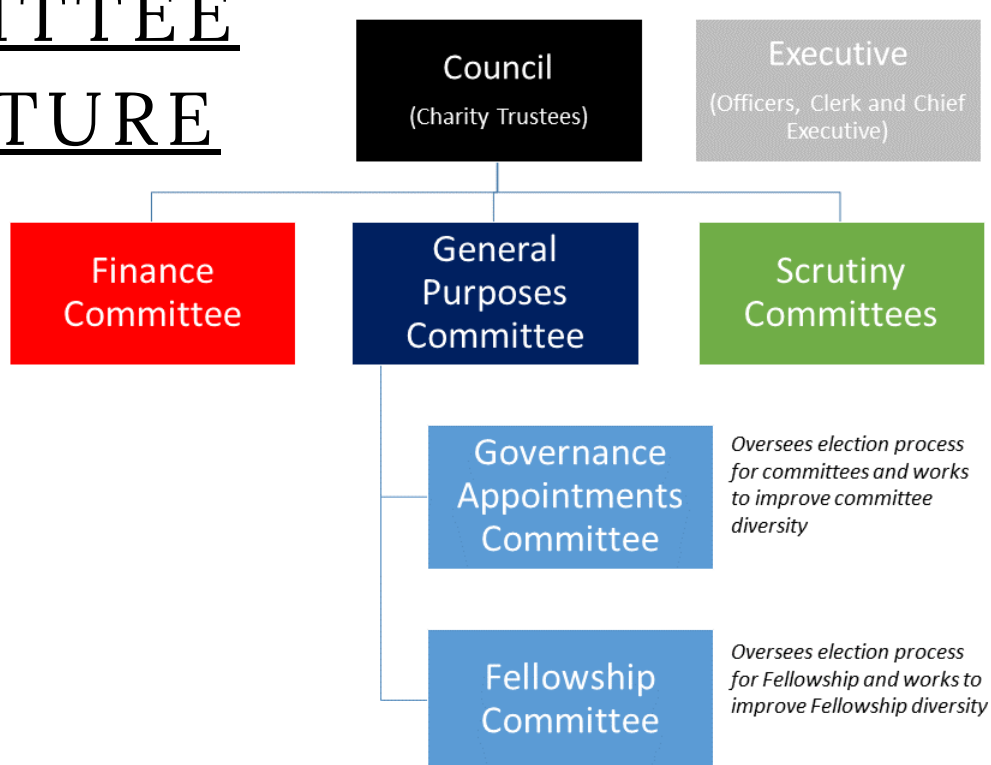
Email: jboyle@lsw.wales.ac.uk



THE LEARNED SOCIETY OF WALES
CYMDEITHAS DDYSGEDIG CYMRU

GOVERNANCE

COMMITTEE STRUCTURE



EXECUTIVE



PRESIDENT
Professor
Hywel Thomas



V-P(HASS)
Professor
Helen Fulton



V-P (STEMM)
Professor
Mike Charlton



TREASURER
Professor
Keith Smith



GENERAL SECRETARY
Professor
Alan Shore



CHIEF EXECUTIVE
Martin Pollard



CLERK
Amanda Kirk



FELLOWSHIP SCRUTINY COMMITTEES

Nominations for new Fellows are considered by one of nine scrutiny committees. Names approved by the committees are then submitted to the Fellowship for approval through election.

A1: Medicine and Medical Sciences

A2: Cellular, Molecular, Evolutionary, Organismal and Ecosystem Sciences

A3: Chemistry, Physics, Astronomy and Earth Sciences

A4: Computing, Mathematics and Statistics

A5: Engineering

B1: Language, Literature and the History and Theory of the Creative and Performing Arts

B2: History, Philosophy and Theology

B3: Economic and Social Science, Education and Law

C1: General Committee



THE LEARNED SOCIETY OF WALES
CYMDEITHAS DDYSGEDIG CYMRU

HOW TO GET INVOLVED

Roles for Fellows

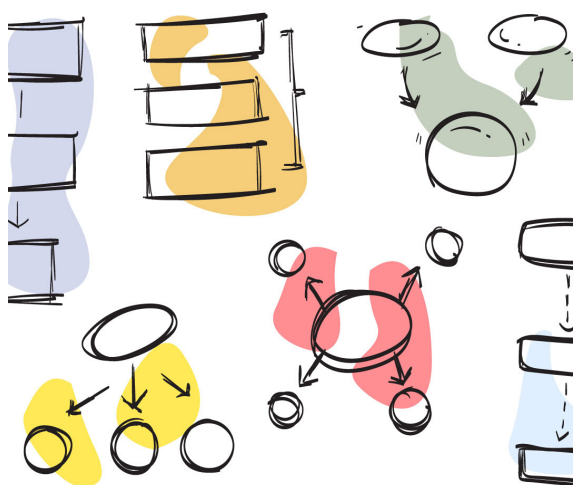
JOIN ONE OF OUR COMMITTEES

We have a number of governance committees responsible for delivering work delegated to them by the Council. Invitations to apply to join committees and Council are sent out in February. To find out more about our committees, email Amanda Kirk: akirk@lsw.wales.ac.uk.



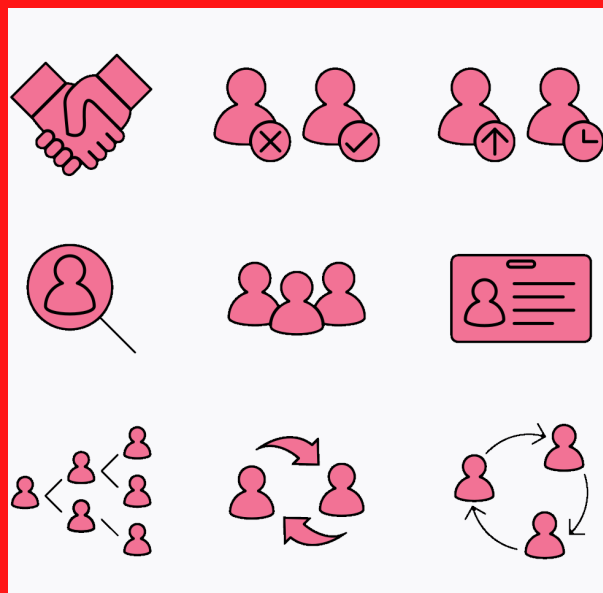
CONTRIBUTE YOUR EXPERTISE

Fellows are central to the projects we organise. Our current areas of focus include promoting Wales Studies; school and community engagement and, during Covid-19, continual learning; and support for early career researchers. Sarah Morse will be happy to discuss how you can be involved: smorse@lsw.wales.ac.uk



TAKE PART IN ONE OF OUR EVENTS

We run lectures, engagement events, symposiums and more. Covid-19 means more of these will take place online. This is an opportunity as well as a challenge. Fellows attend and speak at these events, which we advertise widely. If you have an idea for an event, do contact Martin Pollard: mpollard@lsw.wales.ac.uk



CONTRIBUTE TO OUR POLICY RESPONSES

We draw on Fellows' expertise to provide formal responses and comments on a number of areas of Welsh and UK Government policy. In recent years this has included contributions to proposals around the new Welsh curriculum and higher education funding. We'll let you know of opportunities to engage with our policy work as they arise.



THE LEARNED SOCIETY OF WALES
CYMDEITHAS DDYSGEDIG CYMRU

BUILDING THE FELLOWSHIP

ELECTIONS TO THE FELLOWSHIP SCRUTINY COMMITTEES

The process for electing new Fellows to the Society begins in July when we contact you with details about the annual election process. Fellows can nominate colleagues they believe are eligible for Fellowship. The nine scrutiny committees play a key role in the process. They are established from within the Fellowship and evaluate the nominations received. This is a rigorous process to decide who should be recommended to the Fellowship for election, so membership of the committees is influential. Calls for membership of scrutiny committees are sent out in the summer as vacancies arise.

NOMINATING FOR THE SOCIETY'S MEDALS

The Society awards the following medals each year:

- Dillwyn Medals: outstanding early career research
- Frances Hoggan Medal: outstanding research by women in STEMM
- Hugh Owen Medal: outstanding educational research in Wales
- Menelaus Medal: excellence in engineering and technology

Fellows and members of the public can submit medal nominations on an annual basis. Information about how to nominate is sent in October. Medals are awarded via our medal committees. We will let you know about any vacancies for these committees in the autumn.

BECOME A MEMBER OF THE SOCIETY'S COUNCIL

The Society's ultimate decision-making body is its Council. This is composed of 18 Fellows who make up our board of trustees. Members are elected to the Council for a period of three years, with an opportunity to be re-elected for a further three years. We encourage all Fellows to consider joining the ballot for election to Council. Nominations to Council will be voted on by all Fellows. The ballot is sent out in March.



THE LEARNED SOCIETY OF WALES
CYMDEITHAS DDYSGEDIG CYMRU

WHAT WE DO FOR YOU

FELLOWS BULLETIN

SHARING YOUR SUCCESSES

We send a monthly e-bulletin to Fellows with news from the Society, our partners and the HE sector. We always feature Fellows' news: awards, publications, appointments. If you have news you would like to share in the bulletin, email: jboyle@lsw.wales.ac.uk

FELLOWS BLOG

SHARING YOUR EXPERTISE

Our website includes a Fellows blog. We invite Fellows to write about their work and research. We then share these articles through our social media channels. If you have a suggestion for a blog article, please email Sarah Morse: smorse@lsw.wales.ac.uk

GRANTS

SUPPORTING YOUR EVENTS

Our budget contains money to provide small grants which can support events run by Fellows and others. If you are planning an event and would like to apply for a grant, please fill out the '[Apply for Event Support](#)' form on our website page.

ANNUAL DINNER

CELEBRATING YOUR SOCIETY

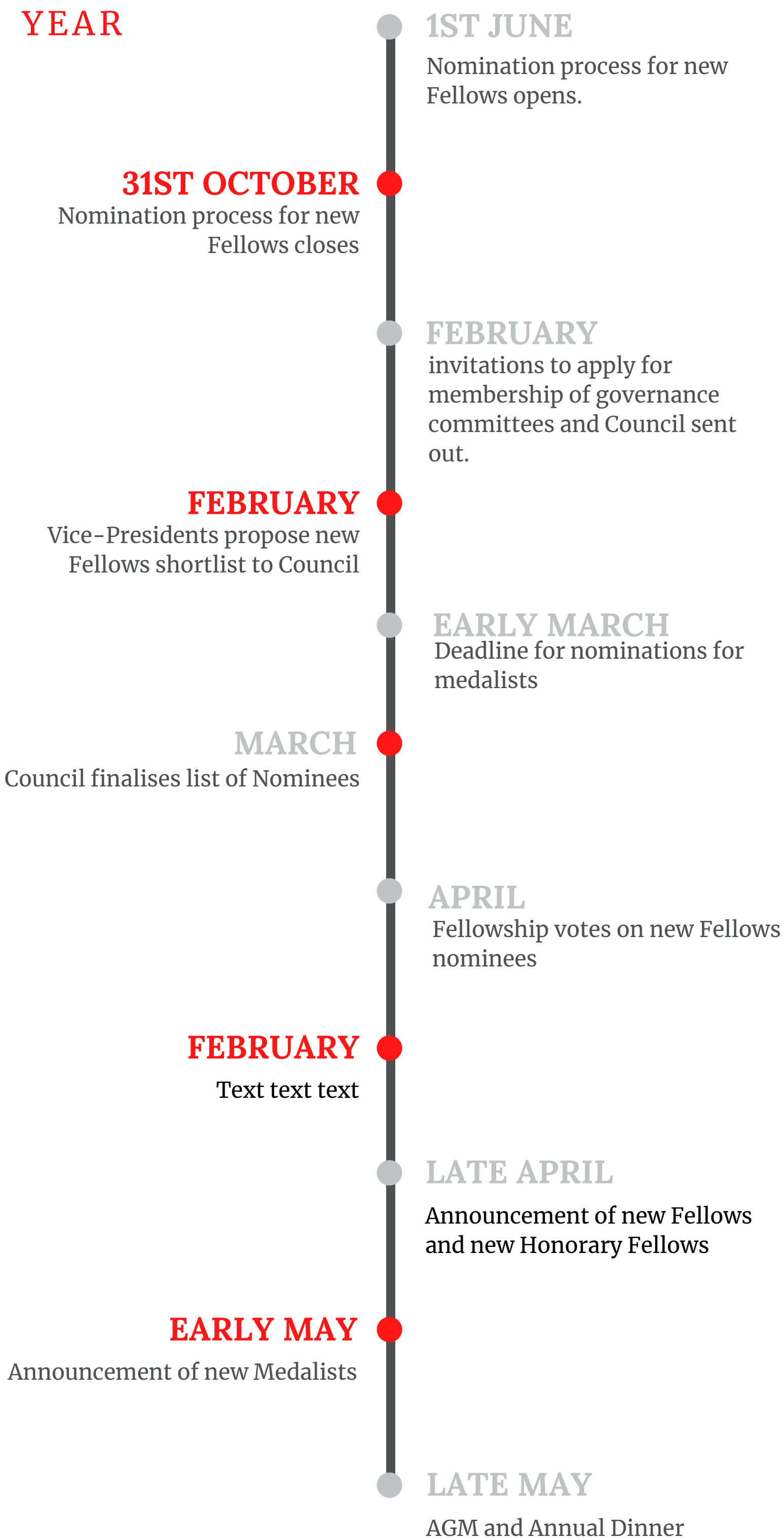
The annual dinner takes place in May after our AGM. Covid-19 forced its cancellation this year. We look forward, in hope, to gathering in 2021 for a convivial evening to celebrate the achievements of the past year and welcome new Fellows and medalists.



THE LEARNED SOCIETY OF WALES
CYMDEITHAS DDYSGEDIG CYMRU

CALENDAR

A BRIEF OUTLINE OF THE SOCIETY'S YEAR



AND FINALLY...

Subscriptions

Fellows support the Fellowship through an annual subscription payment. Current rates for Fellows are as follows:

Under 70 years: £160.00
70 years and over: £80.00
85 years and over: no charge
(age as of May 20, 2020 for 2020/2021 subscription year)

There is also a one-time administration fee of £80.00 for new Fellows. These fees are important to the functioning of the Society and much appreciated.

Subscription payments are classed as a donation, so are eligible for Gift Aid. All Fellows eligible to register for Gift Aid are strongly encouraged to do so. Gift Aid forms, and a link to complete one online, will be sent out with the 2020/2021 invoice. Please note subscription payments are not classed as professional fees.

Invoices will be sent out by email from August 2020. Fellows are also strongly encouraged to register for direct debit payment of annual subscriptions against the invoice.

LSW has a hardship policy, upon application to the Chief Executive, to waive or reduce fees in extenuating circumstances, such as illness. Please contact Janice for further information about any aspect of fees or general donations.



New fellows are encouraged to use the initials FLSW after their name

Learned Society of Wales
University Registry
King Edward VII Avenue
Cathays Park
Cardiff CF10 3NS

Image rights

[Policy Vectors by Vecteezy](#)

[Project Vectors by Vecteezy](#)

[Meeting Vectors by Vecteezy](#)



THE LEARNED SOCIETY OF WALES
CYMDEITHAS DDYSGEDIG CYMRU